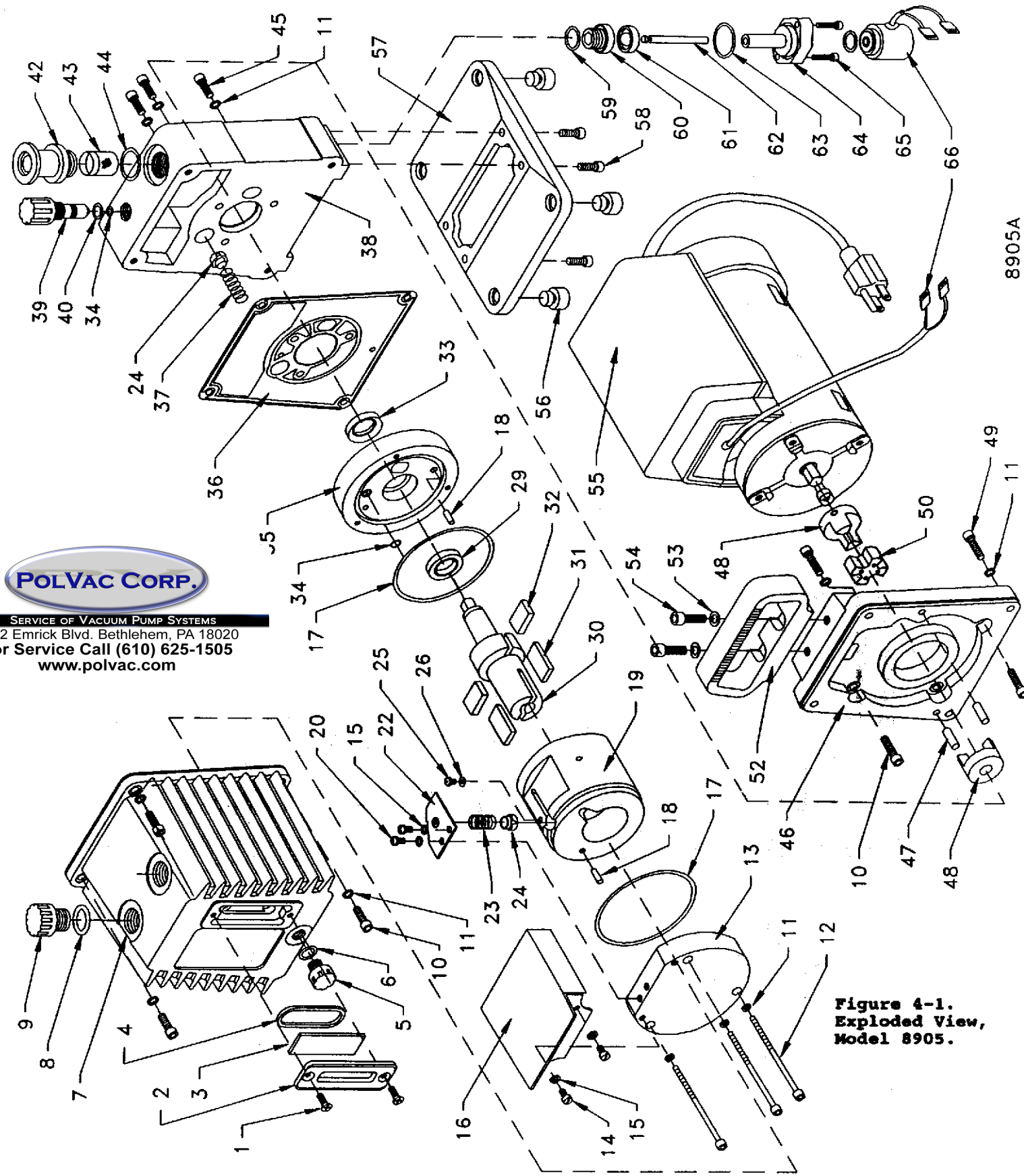


SECTION 4: ILLUSTRATED PARTS LIST



SERVICE OF VACUUM PUMP SYSTEMS
 2442 Emrick Blvd. Bethlehem, PA 18020
 For Service Call (610) 625-1505
 www.polvac.com

Figure 4-1.
 Exploded View,
 Model 8905.

8905A

PARTS LIST
MODEL 8905A VACUUM PUMP

ITEM	QUAN	PC.NO.	DESCRIPTION	ITEM	QUAN	PC.NO.	DESCRIPTION
1	2	61-2232	Fl. Hd. Screw 8-32x1/2	37	1	61-2204A	Gas Ballast Spring
2	1	61-2228A	Oil Window Cover	38	1	61-2215D	Mounting Plate Assy
3	1	61-2229A	Oil Window Glass	39	1	61-9279A	Gas Ballast Valve Assy
4	1	61-2231	Tetraseal, Fluoroelastomer #127	40	1	61-9282A	O-ring, Fluoroelastomer #011
5	1	61-1250A	Drain Plug	42	1	61-8464A	Intake Adapter NW 16
6	1	61-2158A	O-ring, Fluoroelastomer #110	43	1	61-9364A	Intake Screen
7	1	61-2230B	Oil Case	44	1	61-2159A	O-ring Fluoroelastomer #116
8	1	61-2130A	O-ring, Fluoroelastomer #115	45	3	2-00-6708	Soc Hd Screw 10-32x1/2
9	1	61-1251A	Filler Plug	46	1	61-2316	Motor Adapter Plate
10	8	2-00-6712	Soc Hd Screw 10-32x3/4	47	2	4-21-5010	Dowel Pin 3/16x5/8
11	14	2-62-0793	Lock Washer, Split #10	48	2	41-2693	Coupling Body
12	3	62-0003	Soc Hd Screw 10-32x3	49	4	2-00-6716	Soc Hd Screw 10-32x1
13	1	61-2153B	End Plate	50	1	41-2694	Spider Coupling
14	2	2-00-2604	Fl Hd Screw 8-32x1/4	51	1	61-2112A	Handle
15	4	2-69-6108	Lock Washer, Split #8	52	1	2-61-1165	Flat Washer 1/4
16	1	61-2030A	Baffle Assembly	53	2	2-01-6112	Soc Hd Screw 1/4-20x3/4
17	2	61-2128A	O-ring, Fluoroelastomer #145	54	2	61-2033C	Motor Assy 1/6 HP
18	2	4-21-3006	Dowel Pin 1/8x3/8	55	1	61-2123A	Bumper
19	1	61-2203C	Stator	56	4	61-2271C	Pump Base
21	2	2-68-5632	Flat Washer #8	57	1	2-00-6812	Soc Hd Screw 10-32x5/8
22	1	61-2017A	Exh. Valve Bracket Assy	58	4	61-2162A	O-ring, Fluoroelastomer, #015
23	1	61-2119A	Valve Spring	59	1	61-2161A	Insert Seat
24	2	61-2118A	Valve	60	1	61-2139A	Disk Assy., ISO Valve
25	1	61-1178A	Orifice	61	1	61-2216A	Plunger
26	1	41-3175	Fiber Gasket	62	1	61-2155A	O-ring, Fluoroelastomer, #020
29	1	41-2988	Lip Seal, Fluoroelastomer	63	1	61-2212A	Adapter, ISO Valve
30	1	61-2106A	Rotor	64	1	2-00-6410	Soc Hd Screw #6-32x5/8
31	2	61-2108A	Exhaust Vane	65	2	61-2308	ISO Operator Assy. with O-ring
32	2	61-2109A	Intake Vane	66	1	70-1000	Hinged Clamp NW16
33	1	61-2220A	Lip Seal, Fluoroelastomer	**	1	70-1004	Centering Ring Assy NW16
34	2	61-2157A	O-ring, Fluoroelastomer #007	**	1	70-1067	Adapter Hose NW16
35	1	61-2214B	Wear Plate				
36	1	61-2149B	Pump Gasket				

** Parts supplied with the Pump but not shown